

After a successful Forum and our Inaugural AGM at the end of September, we have continued with our Autumn meadow restoration works, with field prep and meadow seed spreading now complete on most sites. We have also begun work on several new projects which will provide opportunities for landowners within the Wye Valley AONB looking to carry out habitat enhancement works. See below for info on these on other opportunities and events.

### 1. Upcoming events:

**Sunday 22<sup>nd</sup> October 9am – 12:00 noon**  
– **Breakfast on the Farm** at Townsend Farm,  
Brampton Abbots

One of three ‘Autumn Feast’ events organised by the Herefordshire Food Alliance. We will have a stand and be promoting the role of species rich grasslands in sustainable food production. There will also be a farm walk, games and activities and, of course, a delicious locally sourced breakfast.

For more information and to book tickets

<https://herefordshirefoodcharter.org.uk/blog/breakfast-lunch-and-dinner-feast-this-autumn>



**Wednesday 8<sup>th</sup> November 5pm-7pm – Wye Valley AONB Landowner Event** at Goodrich Village Hall.

An event for landowners who manage land between Coughton and Marstow within 3km visibility of the high voltage power lines. An opportunity to learn about opportunities for capital funding for habitat enhancement including flower rich grassland restoration and creation, wood pasture, hedge planting and restoration, and orchard creation.

See our website for more details <https://www.herefordshiremeadows.org.uk/landscape-enhancement-initiative-in-the-wye-valley-aonb/>

Please book through Wye Valley AONB – Nick Critchley  
[development@wyevalleyaonb.org.uk](mailto:development@wyevalleyaonb.org.uk)



**Farming in Protected  
Landscapes programme**

**Tuesday 14<sup>th</sup> November – Herefordshire Rural Business Advice Day 2023**  
at Hereford Racecourse, Roman Road, Hereford HR4 9QU, drop in any time  
between 12pm – 6pm. We will be there with the Herefordshire Meadows stand.

A free event organised by Herefordshire Rural Hub with presentations and 1to1 advice: “*Come along and talk to representatives from the Farm Herefordshire partners and other businesses and organisations supporting farming and rural business in the county*”.



[Click here for more info](#) or email [admin@herefordshireruralhub.co.uk](mailto:admin@herefordshireruralhub.co.uk)

**Saturday 18<sup>th</sup> November 9.30am-1pm – Recorders’ and Naturalists’ Meeting** at Herefordshire Archive and Records Centre, Fir Tree Lane, Hereford HR2 6LA.

An event for recorders and naturalists with talks from Herefordshire Biological Records Centre (HBRC) – ‘Who we are and what we do’, Tim Kaye - ‘Hidden Herefordshire – Discovering its wildlife and wild places’, Ian Draycott – ‘what do we know about Diptera in Herefordshire?’ and Ana Coxixo – ‘Wetlands: Nature based mitigation’



Herefordshire  
Biological  
Records  
Centre

**Booking is essential - Free event with refreshments provided.**  
Email [hbrc@herefordshire.gov.uk](mailto:hbrc@herefordshire.gov.uk) to book a place.

## [2. Other opportunities](#)

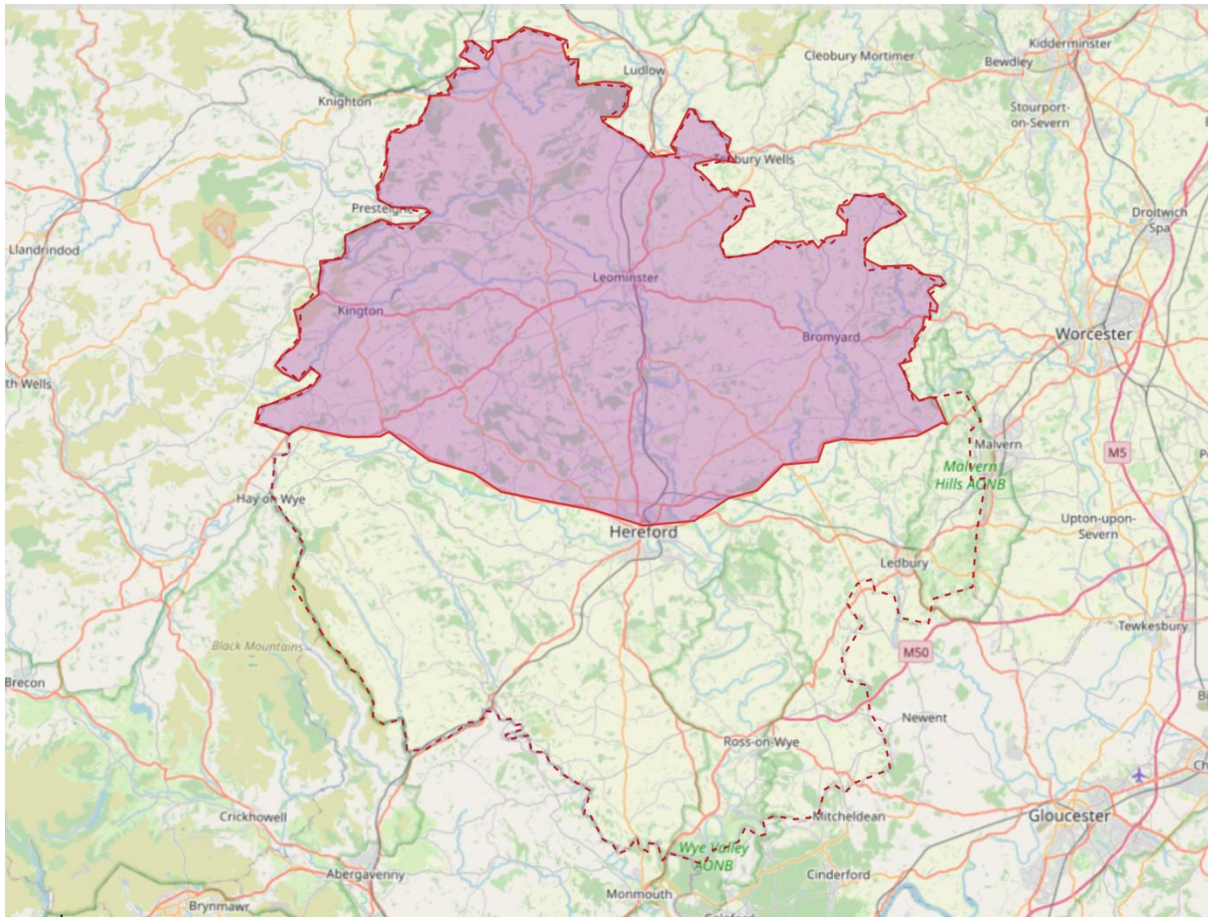
### [Kingspan Meadow Restoration Project Launched](#)

We are excited to announce that, thanks to a generous donation from the former Kingspan Insulation Community Trust, we can support meadow restoration works next year across North Herefordshire. If you own or manage land in the pink area as shown on the map below and would be interested in creating new areas of species rich grasslands on your holding, please get in touch with one of our advisors and we can arrange an initial site scoping visit.

Rory Johnson: [rory@herefordshiremeadows.org.uk](mailto:rory@herefordshiremeadows.org.uk)

Caroline Hanks: [caroline.hanks@farming4wildlife.co.uk](mailto:caroline.hanks@farming4wildlife.co.uk)

Carys Solman: [carys@herefordshiremeadows.org.uk](mailto:carys@herefordshiremeadows.org.uk)



## An Opportunity for Herefordshire Floodplain Farmers

The Wye Valley AONB Partnership are working with Worcester University on a research project considering water flow and storage around the River Wye floodplain. They are currently seeking landowners who would like to participate and explore how they can make best use of the flow of water on their land. One-to-one visits will provide site-specific advice and mapping of water flow lines and opportunities for water storage, with the potential outcome of reducing reliance of abstraction from the river, particularly at times of low water.

There is no charge for the visit, mapping or advice, but there are only a few places remaining for participants and involvement is on a first come first served basis.

So if you are interesting in seeing how you may be able to take more advantage of water on your land please contact either Nick Critchley, Wye Valley AONB Development Officer, on [development@wyevalleyaonb.org.uk](mailto:development@wyevalleyaonb.org.uk) or 07904 017982 or Josie Lynch, PhD student at Worcester University School of Science and the Environment, on [j.lynch@worc.ac.uk](mailto:j.lynch@worc.ac.uk)



## Advice & Guidance for Farmers and Land Managers in the Wye Valley Area of Outstanding Natural Beauty (AONB)

Herefordshire Meadows is excited to be involved in a new Wye Valley AONB project to provide support to farmers and land managers wishing to carry out environmental projects in the English side of the AONB.

Herefordshire Meadows' contribution to this project will be to carry out assessments of grassland heath including looking at species diversity and soil health indices. Landowners will then be offered conservation and restoration guidance and signposting to grant support.

If you farm or own land in this area and are interested in finding out more contact one of the Herefordshire Meadows advisors:

Rory Johnson – [rory@herefordshiremeadows.org.uk](mailto:rory@herefordshiremeadows.org.uk)  
Caroline Hanks - [caroline.hanks@farming4wildlife.co.uk](mailto:caroline.hanks@farming4wildlife.co.uk)  
Carys Solman – [carys@herefordshiremeadows.org.uk](mailto:carys@herefordshiremeadows.org.uk)



### Farming in Protected Landscapes programme

## Pasture and Profit in Protected Landscapes

Pasture for Life have recently been awarded funding by the Shropshire Hills, Wye Valley and Malvern Hills AONBs to run a free, innovative mentoring and events programme until 2025 for farmers interested in nature friendly or regenerative farming practices. The offer includes:

1. A comprehensive series of on-farm events & webinars across all three regions covering a wide range of topics.
2. A unique opportunity for 26 farms within the programme to be allocated a trained, experienced farmer mentor to assist with implementing innovative livestock management systems.
3. Free Pasture for Life membership (worth £120)

You can read more details in this flyer [Pasture and Profit in AONBs flyer Sept 2023](#)

If you are interested in being part of this [exciting project](#), or to find out more, contact Ruth Pullan [severnwye@pastureforlife.org](mailto:severnwye@pastureforlife.org).



## Herefordshire Local Wildlife Site Project

Herefordshire Wildlife Trust in collaboration with Herefordshire Council are embarking on an ambitious new project surveying the county's Local Wildlife Sites (LWS). We are looking to contact landowners who own existing LWS sites or those wishing to get a new site selected. We have particular interest in high quality species rich grasslands with a high abundance of positive indicators, as well as ancient woodlands and traditional orchards. An LWS selection will afford your site long term protection in the form of presumption against development. As part of the project we can offer free surveying services, after which we will submit your site to the LWS panel for approval. We can also offer a long-term management plan.

Please get in touch with **Toby Fountain**, Nature Recovery Officer, if you wish to know more: [t.fountain@herefordshirewt.co.uk](mailto:t.fountain@herefordshirewt.co.uk), 07932235942

For more Information on Local Wildlife Sites (LWS):

**What is a Local Wildlife Site?:** <https://www.herefordshiremeadows.org.uk/a-wilder-herefordshire-project/>

**What are the advantages of an LWS selection?:**

<https://www.herefordshiremeadows.org.uk/a-wilder-herefordshire-project/>



**Herefordshire  
Wildlife Trust**



**Herefordshire  
Council**

## Donate:

We are now fully registered for donations through the Charities Aid Foundation (CAF). If you would like to make a donation to support the preservation, restoration and creation of species rich grasslands across Herefordshire you can do this by following this link. <https://cafdonate.cafonline.org/23639#!/DonationDetails>

## Follow us:



We now have [Facebook](#), [Instagram](#) and [LinkedIn](#) accounts. Please like and follow us.

Herefordshire Meadows Team